

## DD 06040 - 6V 4Ah - C20

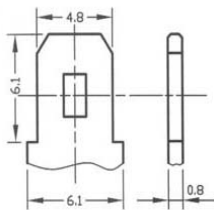
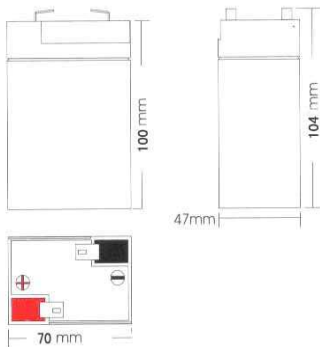


### Features

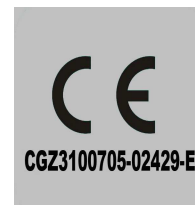
- Special grid alloy and plate design
- Long service life
- High charging performance
- High gas recombination technology
- Low-self discharge characteristic
- Wide operating temperature range

### Application

- Measuring instrument
- Medical equipments
- Telephone sets
- Lighting equipment
- Security & alarm systems
- UPS power supply
- Power station and telecom station



F1 Terminal



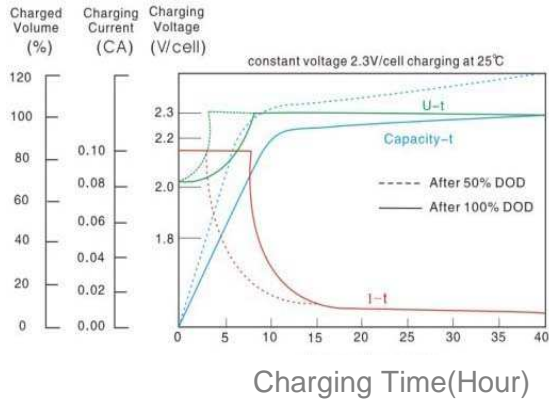
### Specification

Cell per unit	3
Normal Voltage	6V
Normal Capacity	4 Ah
Weight	Approx. 0,64 Kg (1,411 lbs)
Internal Resistance	Approx. 20,4 mΩ
Normal Operating Temperature Range	25°C
Recommended Maximum Charging Current Limit	1 A
Float Charging Voltage	13,6 to 13,8VDC/unit Average at 25°C (77°F)
Equalization and Cycle Service	14,1 to 14,4VDC/unit Average at 25°C (77°F)
Self Discharge	Reddot Batteries can be stored for more than 6 months at (25°C/77°F). Please charge batteries before using. For higher temperatures the time interval will be shorter.
Terminal	F1

## Characteristics

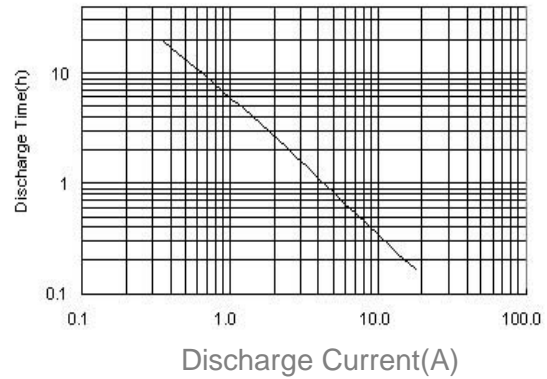
Rated Capacity	20 hour rate(0,2A)	4,0AH
	10 hour rate(0,4A)	3,8AH
	5 hour rate(0,64A)	3,2AH
	27 min rate(4A)	1,8AH
	7 min rate(12A)	1,4AH

### Charging Characteristics(25°C/77°F)

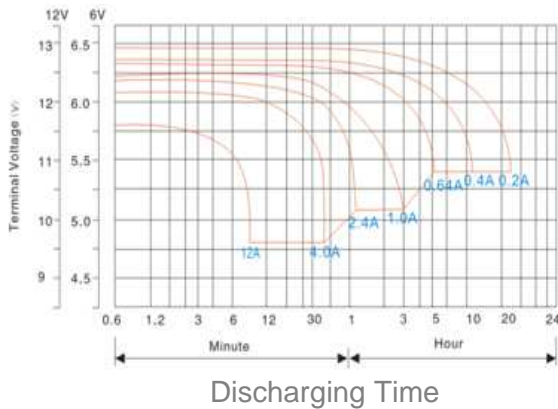


### The Relation between Discharging

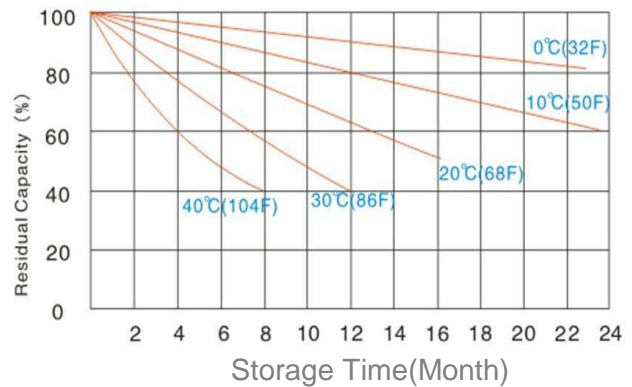
### Current and Discharging time(25°C/77°F)



### Discharging Characteristic(25°C/77°F)



### Self-Discharging Characteristic(25°C/77°F)



### Constant Current Discharge Characteristics (Amperes at 25°C)

Cut-off Voltage/cell	5min	10min	20min	45min	1Hr	2Hr	4Hr	8Hr	10Hr	20Hr
1,70	15,7	10,2	5,70	2,96	2,47	1,54	0,85	0,485	0,408	0,221
1,75	15,5	10,1	5,64	2,94	2,45	1,48	0,85	0,481	0,404	0,218
1,80	15,4	10,0	5,59	2,90	2,43	1,42	0,84	0,476	0,400	0,216

### Constant Power Discharge Characteristics (Watts at 25°C)

Cut-off Voltage/cell	5min	10min	20min	45min	1Hr	2Hr	4Hr	8Hr	10Hr	20Hr
1,70	94,05	61,18	34,16	17,73	14,81	9,210	5,124	2,908	2,421	1,308
1,75	93,07	60,64	33,84	17,62	14,70	8,853	5,092	2,886	2,400	1,297
1,80	92,10	60,00	33,51	17,40	14,59	8,497	5,059	2,854	2,378	1,286

All mentioned values are average values